
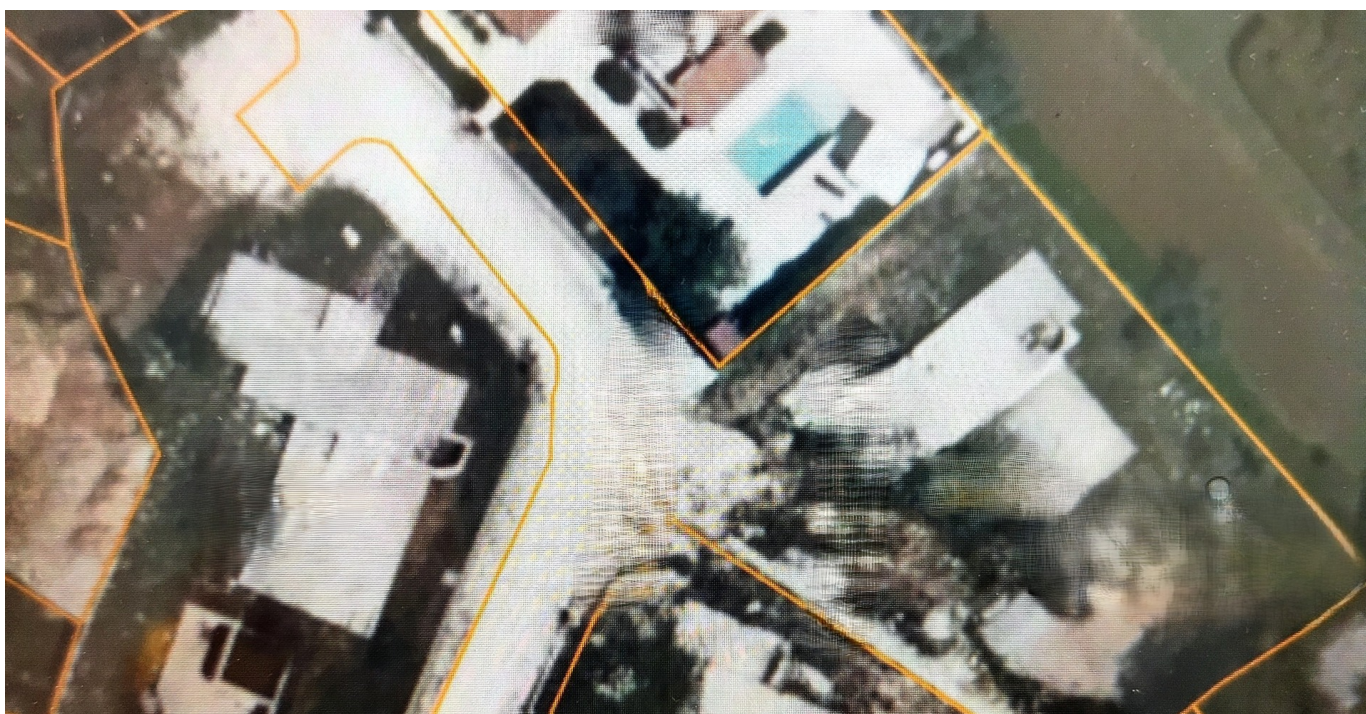




## BUILDING LAND WITH A PROJECT IN A QUIET LOCATION

 Smoljanci, Svetvinčenat

 **150,000 €**  
162 €/m<sup>2</sup>



Svetvinčenat is a municipality in western Croatia and is located in the Istrian County. Svetvinčenat is known for its events that are traditionally held and in this way promote cultural heritage. It is a settlement with a rich history, and is surrounded by untouched nature and typical Mediterranean vegetation. The place is known for its agricultural tradition, and you can see traditional Istrian houses and older buildings located not far from the main roads that connect various Istrian cities. The location certainly has its authenticity and is why people love the mentioned place.



Building land with a total area of 926 m<sup>2</sup>. The land is in a beautiful location, has a wide access road, its own entrance and privacy to ensure peace for everyone. The land is away from the main road and has a regular rectangular shape. A project for a wonderful complex of houses has been created on the mentioned land. It has electricity connections, water with separate meters and a bio septic tank. Construction has begun on the plot with a valid building permit for the construction of a two-story house of approximately 200 m<sup>2</sup> with a 30 m<sup>2</sup> swimming pool.

The location is ideal for lovers of nature and peace because we definitely need such a location to regenerate energy, fill the soul and restore strength in these fast-paced times. Places like this are ideal for family life or a place to invest because it has great potential for hospitality, which would significantly accelerate the return on investment.

FOR ALL ADDITIONAL INFORMATION AND VIEWING, FEEL FREE TO CONTACT ME;

+385 91 539 6446

edita.premate@family-nekretnine.hr

Edita Premate Panić

Mediation Assistant

## Summary

LOCATION	Smoljanci, Svetvinčenat	PROPERTY ID	2600
PRICE	150,000 €	TYPE	Land
LAND TYPE	FOR BUILDING	AREA	926 M <sup>2</sup>
ORIENTATION	SOUTHWEST	VIEW AT	GREENERY
NUMBER OF FLOORS	-	ACCESS ROAD	YES
DISTANCE FROM SEA	-	DISTANCE FROM CENTER	-
OWNERSHIP TYPE	ORDERLY	CERTIFICATE OF OWNERSHIP	YES
LOCATION PERMIT	-	BUILDING PERMIT	YES



## Extra features

- Access road
- Forest

## Infrastructure

- Electricity
- Water

[View original listing](#)